



## Our healthcare services portfolio includes

- Reproductive & child health improvement
- Curative services for various diseases
- Water, Sanitation & Hygiene (WASH) Improvement
- Infrastructure & technological solutions
- Awareness & knowledge dissemination among communities
- Capacity building of health workers



## Our bouquet of services in education comprises

- Improving learning outcomes through technology & innovative methods
- Capacity building of teachers
- Introducing pilots of education projects
- Systemic improvement through stakeholder engagement



## The livelihoods services are made up of

- Agricultural value chain improvement with a focus on small & marginal farmers
- Development of off farm activities
- Enterprise development for women and marginalized
- Skill development projects



ACCELERATING  
DEVELOPMENT



## About Us

Social Xleration uses technological catalysts and in-depth insights on communities along with activating important social intersections and strengthening institutions to positively impact the triad of health services, education and livelihoods and is recognized for its ability to attain accelerated development outcomes.

## Mission

Our mission is to expedite the process of development for a more levelled growth.

## Strategy

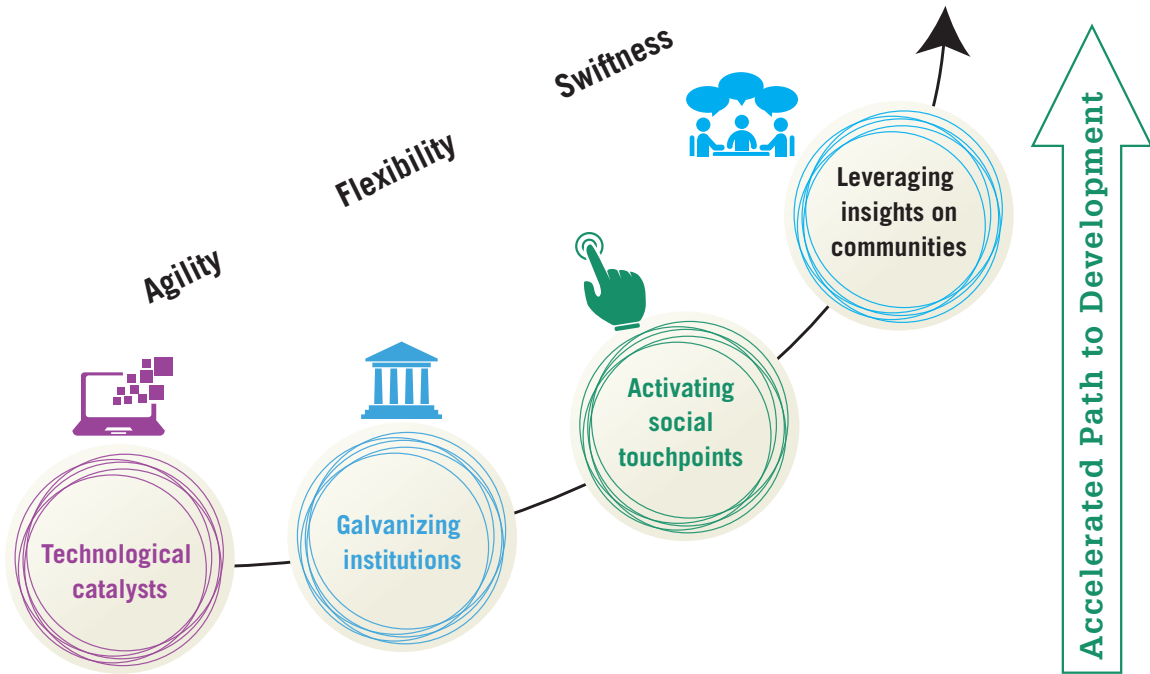
Our strategy is to bridge development lacunas through technological solutions, insights, effective institutions and activating social touch points in a partnership mode to trigger fast-paced development.

## Areas of Expertise

- Project Conceptualization & Management
- Donor Funds Management
- Relevant Expertise & Technological Solutions Delivery
- CSR Advisory
- Research Studies
- Monitoring & Evaluation
- Training & Capacity Building
- Communications & Knowledge Management



## Social Xleration's Model of Accelerated Development



## Thematic Areas of Services

We focus on the areas of Health, Education and Livelihoods, which we consider as bedrock to hasten development of a region.



**Health**



**Education**



**Livelihoods**

